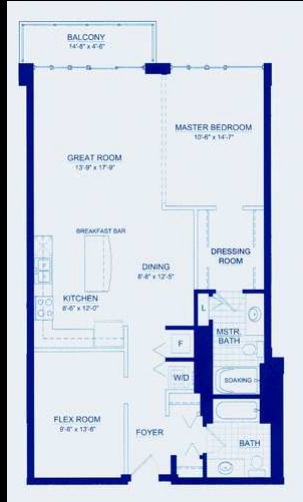






Image from <http://www.flickr.com/photos/shinythings/2402137036/>

Creation requires Software

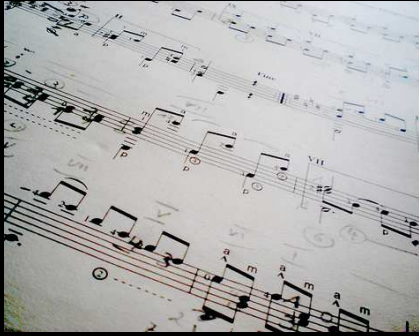


Plans



Architect

Image from <http://www.flickr.com/photos/jm3/194885496/>
<http://www.flickr.com/photos/jeffwerner/537297103/>



Sheet Music



Musician

Image from <http://www.flickr.com/photos/hepach/3123618254/>
<http://www.flickr.com/photos/techne/135235595/>

```
/*
 * GNU General Public License!
 * (c) 1995-2007 Microsoft Corporation
 */
#include "dos.h"
#include "win95.h"
#include "win98.h"
#include "sco_unix.h"

class WindowsVista extends WindowsXP implements Nothing
{}

int totalNewFeatures = 3;
int totalWorkingNewFeatures = 0;
float numberOfBugs = 345889E+08;
boolean readyForRelease = FALSE;

void main {
  while (!CRASHED) {
    if (first_time_install) {
      if ((installedRAM < 2GB) ||
          (processorSpeed < 4GHz))
        {
          MessageBox("Hardware incompatibility error.");
          GetKeyPress();
          BSOD();
        }
    }
    Make10GBswapfile();
    SearchAndDestroy(FIREFOX|OPENOFFICEORG|ANYTHING_GOOGLE);
    AddRandomDriver();
    MessageBox("Driver incompatibility error.");
    GetKeyPress();
    BSOD();
  }

  //printf("Welcome to Windows 2000");
  //printf("Welcome to Windows XP");
  printf("Welcome to Windows Vista");

  if (still_not_crashed){

```

Source Code



Programmer

Image from <http://www.flickr.com/photos/crackvan/2383417575/>
<http://www.flickr.com/photos/altemark/142649790/>



© Copyright

Examples of Open Source Software



mozilla
Firefox



Linux



eMule

OpenOffice.org



Image from <http://www.flickr.com/photos/thejourney1972/1985700913/>



Image from http://en.wikipedia.org/wiki/File:Lula_-_foto_oficial05012007_edit.jpg

